

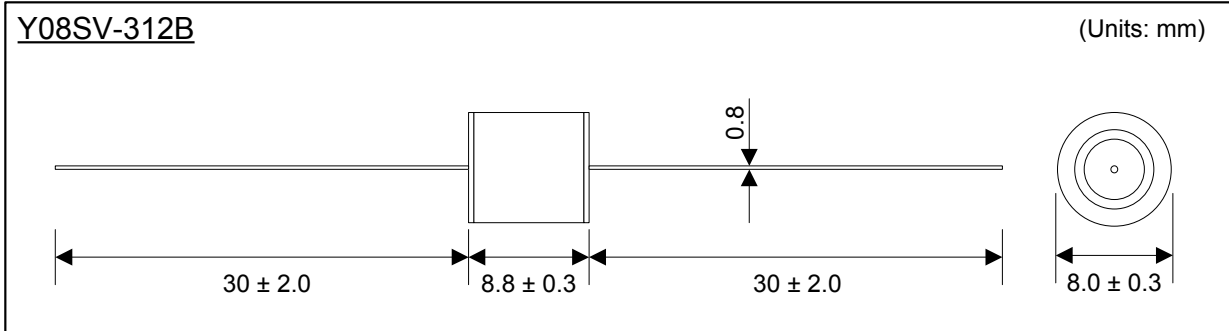
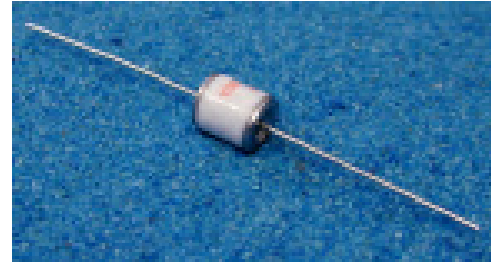
Two Electrode Gas Tube Surge Arrester

Part Number: Y08SV-312B



Features:

- UL 1449 Recognized (File E328370)
- 100% Lead-Free (RoHS Compliant)
- IEC60950 Line Isolation
- Proven Performance
- World Renowned Quality



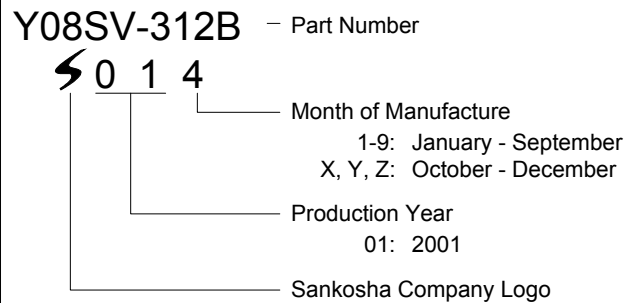
Applications:

Transient Voltage Surge Suppression (TVSS), AC Line Input Protection, Power Supplies, CATV Systems, Televisions, Antennas, Set Top Boxes

Notes:

- In circuit board applications, the area beneath the gas tube should be clear of copper traces.
- Series resistance, typically an MOV, is required in AC power supply applications to limit follow on current .

Marking Example: Part Number Y08SV-312B



Electrical Characteristics

1.	DC Breakdown Voltage	5 kV/sec	2850 - 3500V		
2.	Impulse Breakdown Voltage	1 kV/μsec	< 3700V		
3.	Insulation Resistance	DC 1000V	> 100 M-ohm		
4.	Capacitance	1 MHz	< 1.0 pF		
5.	Impulse Discharge Current	8/20 μsec	10 kA	1 Time	
		8/20 μsec	3 kA	Each Polarity 10 Times	3 Min. Intervals
6.	Impulse Life	8/20 μsec 100A	> 300 times	1-2 Minute Intervals	

After Life Tests

7.	DC Breakdown Voltage	5 kV/sec	2650 - 3700V		
8.	Impulse Breakdown Voltage	1 kV/μsec	< 4200V		
9.	Insulation Resistance	DC 1000V	> 1 M-ohm		

SANKOSHA

SANKOSHA